

Study in Belgium

Discover our International Programmes

2025 - 2026





Table of Contents

04 WELCOME TO THOMAS MORE

05 WELCOME TO BELGIUM

06 INTERNATIONAL PROGRAMMES

08 BUSINESS & TOURISM

08 Bachelor of International Business Management

09 Bachelor of International Tourism and Leisure

10 MEDIA & COMMUNICATION

10 Bachelor of International Communication and Media

10 Bachelor of International Journalism

11 Bachelor of Information Management and Multimedia

11 Bachelor of International Media and Entertainment Business

12 TECHNOLOGY & ICT

12 Bachelor of Applied Computer Science

12 Bachelor of Automotive Technology

13 Bachelor of Electronics-ICT

14 POSTGRADUATES

14 Postgraduate E-sports Manager

15 Postgraduate African Business Studies

15 Postgraduate International Teacher

16 Postgraduate Orthopaedic Technology

16 Postgraduate Creative Belgium School

17 Postgraduate Pharma and Healthcare Logistics

17 Postgraduate Space and Service Design

19 HOME BASE

19 Welcome to Geel

20 Welcome to Mechelen

21 Welcome to Sint-Katelijne-Waver

22 STUDENT SUPPORT

23 Living in Belgium

24 Students know best

26 ADMISSION & APPLICATION

28 MEET US

Welcome to Thomas More

Where it happens.

Thomas More is the largest university of applied sciences in Flanders. A community of almost 22,000 students, staff members and researchers. As a pioneer in the 'learning by doing' method, we offer students tailored learning through our innovative labs, hands-on course methodology and real-world project opportunities.

You will study on one of our 12 campuses, along with 22,000 fellow students. We offer 42 full bachelor's degrees, including 10 taught entirely in English, and 19 associate degree programmes.

Trend-setting degrees

Thomas More is a pioneer in the practice of 'learning by doing.' We put our students in the driver's seat, with an emphasis on innovative labs, internships and real-world projects executed in close collaboration with our partner companies.

Dedicated and experienced staff

Know the ins and outs of your field of study and have close ties with companies in the industry. Once you graduate, you'll be ready to transition seamlessly into your profession.

International connections

Take advantage of our partnerships with leading businesses and organisations worldwide. Gain work experience and build up your network.

Prepare for the real world

Our courses are designed in close cooperation with innovative and leading companies and organisations in specific industries to ensure that you are ready to dive headfirst into your future career.

World-renowned university association

Thomas More is part of the KU Leuven Association. KU Leuven is ranked in the QS top 100 universities in the world and 45th place in the Times Higher Education University Rankings.

Our reputation precedes us

As a Thomas More graduate, you will be known for having the right attitude & skillset for the 21st century – and the professional know-how to back it up. Good to know: 99% of our students find a job within 3 months of graduating!



Discover
more in our
videozone!



Welcome to Belgium

Study in the Heart of Europe

International experience guaranteed

Belgium is home to the headquarters of the European Union – with easy train connections to Amsterdam, Paris, London and Berlin – making it a true international hub.

Multilingual

English is widely spoken throughout Belgium (on top of the other 3 official languages: Dutch, French and German).

Open-minded

Belgians are known for being open-minded and are always excited to meet non-Belgians.

Intelligent

The Flanders region has one of the most highly ranked education systems in the world.

Food lovers

Who doesn't love chocolate, fries and waffles?



Discover more in our videozone!



International Programmes

We offer a range of inspiring English-taught international degree programmes giving (foreign) students with high ambitions access to our top-quality education. In addition to the full (three-year) programmes, we also organise abridged (one-year) courses to obtain a second degree.

thomasmore.be/en/degrees



Your degree, your choice!

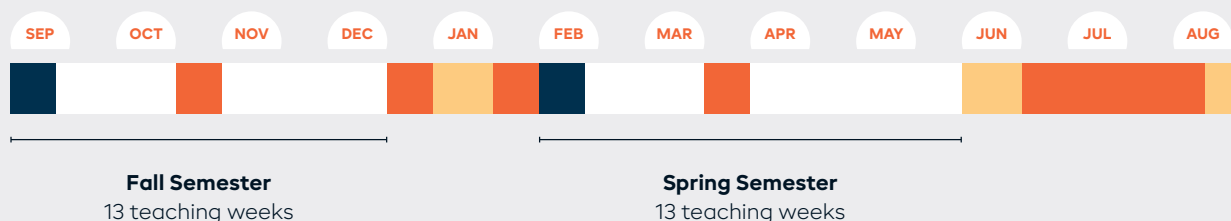
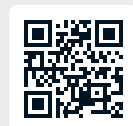
Choose from one of Thomas More's many competitive degree programmes, taught in English. Whether you're looking for a classic 3-year bachelor's degree or an abridged 1-year degree, we've got you covered!

- Bachelor's degree**
 Full-degree programmes (6 semesters) consisting of thorough theoretical knowledge, practical application and preparation for a professional career.
- Abridged bachelor's degree**
 These short programmes allow you to obtain a second bachelor's degree in one year (2 semesters).
- Postgraduate programmes**
 Graduated? Expand your knowledge and skills acquired in your bachelor's or master's degree. Earn a postgraduate programme in just 2 semesters.

www.thomasmore.be/en/welcome

Choose your start date

You can choose a start date that fits your life – **begin your studies in either September or February**. Check the possibilities for your programme in this brochure or online!



Welcome days
 Free weeks
 Revision and exam period

Partners in Education

Our **'Partners in Education'** will be an integral part of your **educational journey**, rounding out your education with practical, **real-life experience**. All those companies support Thomas More students by sharing expertise, coaching tomorrow's leaders and challenging you to achieve MORE. Not to mention, their names will look great on your resume!



International Internship

Working abroad allows you to put what you've learned into practice and gain the real-world expertise that employers value.

Most of our international degrees include international internships, which give students hands-on work experience and a serious resume boost!

Putting the 'international' into international studies

If you think our programmes are only international in content, think again! Students from all over the world come to study at Thomas More, creating a diverse community that represents a wide variety of cultures and life experiences.

International Study Exchange

A study exchange gives you the opportunity to specialise in certain areas, immerse yourself in another language and explore new cultures. When picking a study exchange destination, students can choose from our worldwide network of university partners. Reviews from past students and an easy-to-use database will help you find the best fit.

Setting you up for success!

A bachelor's degree programme is an exciting new adventure – and also a challenging one. At Thomas More, we are committed to our students' success. We organise regular workshops and drop-in sessions aimed at developing your study skills and test-taking strategies. There's nothing to stop you from reaching your goals.

Going global

Our English programmes focus on building up your international portfolio and getting you ready to compete on the global stage.

Most of our degrees include an international component, whether it's a study exchange, an internship or an international project.

Business & Tourism

Bachelor of International Business Management

Data Science, Protection & Security
(Specialisation)

- Full (3 year) programme
- Mechelen, Campus De Vest
- Start date: February or September

 thomasmore.be/en/eba-dsps

Turn information into insights, into results!

- Ready to take the plunge into the fast-moving, high-tech world of big data?
- Start acquiring the business knowledge and ICT skills that will enable you to make the connection between both worlds.
- Learn how to unlock the full power of data to make businesses smarter, more efficient, more agile and more profitable.
- Boost your cyber security capabilities with the latest technologies and techniques.
- Discover the art and science of extracting insights from data.
- Put the theory into practice tackling real-life projects from the corporate world.
- Get an inside perspective during an intensive internship.
- Get an extra certificate: Google Analytics, Certified Ethical Hacker ...



Bachelor of International Business Management

Global Supply Chain Management
(Major)

- Full (3 year) programme
- Mechelen, Campus De Vest
- Start date: February or September

 thomasmore.be/en/eba-gscm

Get ready to change the world!

- Dive deep into the fast-paced world of global goods & logistics flows.
- Acquire new insights into the world of global business, economics & trade.
- Explore cultural differences and their impact on foreign trade & logistics.
- Improve your commercial, digital, analytical and communication skills in different languages.
- Focus on various transport modes: air, sea, train and road.
- Hone your skills in supply chain design, green logistics, and urban & waste logistics.
- Track logistical trends in healthcare, vaccinology, chemicals and e-commerce in a post-pandemic world.
- Understand the relationship between innovation, technology, automation and supply chain management.
- Conduct a 12-week internship project in Belgium, Europe or further afield.



Bachelor of International Tourism and Leisure

- Full (3 year) or abridged (1 year) programme
- Mechelen, Campus De Vest
- Start date: February or September

thomasmore.be/en/eba-itl (full programme)

thomasmore.be/en/eba-itl-short (abridged)

Turn your passion for travel into a genuine profession!

- Unique, full English programme in Tourism and Hospitality Management to prepare you for your international future.
- Transform your love for travel into a thriving career in the dynamic world of international tourism and hospitality.
- Equip yourself with the knowledge and skills necessary to create transformative solutions in this fast-evolving industry.
- Learn to apply disruptive business models, to design innovative, memorable travel experiences and unique tourism products, that have a sustainable impact on the tourism ecosystem.
- Discover emerging trends in this fast evolving industry, and identify solutions that support inclusive and sustainable tourism development.
- Elevate your international network by creating valuable professional connections while you study, giving yourself a head start in the competitive job market.

Bachelor of International Business Management

International Business & Trade

(Major)

- Full (3 year) programme
- Mechelen, Campus De Vest
- Start date: February or September

thomasmore.be/en/eba-ibt

Broaden your horizons!

- Entrepreneurship is in your blood; you know an opportunity when you see one.
- You're ready to dive into the fast-paced world of global business and trade.
- You will explore cultural differences and their impact on foreign trade.
- The theoretical knowledge and insights you acquire come together with pragmatic models and practical skills to make a real impact.
- A real-life international project will challenge you to push your limits.
- International experience and networks will add substance to your resume as will your internship abroad.
- By combining language courses in Chinese, German, Spanish, French or Dutch, your studies will pave the way for an inspiring international career.



Media & Communication

Bachelor of International Communication and Media

Branding & Activation (Specialisation)

Public & Corporate Affairs (Specialisation)

- Full (3 year) or abridged (1 year) programme
- Mechelen, Campus De Ham
- Start date: February or September

thomasmore.be/en/eba-icm (full programme)

thomasmore.be/en/eba-icm-short (abridged)

From idea to impact in an international mindset!

- You're a digital savvy and can navigate the media landscape with ease.
- Your global outlook will help you approach new ideas with an open mind.
- Get ready to sharpen your strategy mindset and creative skills.
- Deep dive into all aspects of communication and media via interactive classes.
- Learn the tricks of multiple trades from graphic design and audio to video and web.
- Explore the intercultural, psychological, marketing and technological aspects of media.
- Take your studies global with a semester at one of our international partner universities.
- Learn to transform communication plans into results during your international internship.
- You will stand at the forefront of innovation in the business world.



Bachelor of International Journalism

- Full (3 year) or abridged (1 year) programme
- Mechelen, Campus De Ham
- Start date: September

thomasmore.be/en/eba-jou (full programme)

thomasmore.be/en/eba-jou-short (abridged)

New world, new narratives, new voices!

- Do you have a story to tell? Do you need your voice to be heard? Do you want to add some humanity to the often brutal world we're living in?
- Our international programme gives you exactly the 21st-century perspective on journalism you have been looking for.
- With course content such as climate or migration reporting, you are fully equipped for a job in the editorial offices of the future.
- We also offer courses on new narratives in sociology, economy or history, coming from non-western perspectives.
- Innovation is key: yes, we do encourage the use of AI in your journalistic work.
- Skillwise you don't need to choose between text, audio or video: all three options will be in your resume.
- You will work in an English-speaking newsroom environment, with students from different cultures and backgrounds.
- This diversity enhances your learning experience, within the classroom and beyond.

Bachelor of Information Management and Multimedia

International Digital Experience Design (Specialisation)

- Full (3 year) programme
- Mechelen, Campus De Ham
- Start date: September

thomasmore.be/en/eba-ixd

Start building the world of tomorrow!

- Helping to create a better future is what gets you up in the morning.
- Get the skills you need to design and build the digital products of tomorrow.
- Learn how to use technology as a tool for boosting efficiency, sustainability and quality of life.
- Apply your creativity to develop interactive and intuitive interfaces.
- Help steer the future course of our society with products that are both socially relevant and commercially viable.
- Work in a creative, inspiring and supportive environment that challenges you to go beyond your best.

Bachelor of International Media and Entertainment Business

- Full (3 year) or abridged (1 year) programme
- Mechelen, Campus De Ham
- Start date: September

thomasmore.be/en/eba-meb (full programme)

thomasmore.be/en/eba-meb-short (abridged)

Passion to paycheque across every platform!

- Take that passion to international markets!
- Learn how to make a living out of what you love doing and turn your passion into a paycheque.
- Discover the fundamentals of the creative industries.
- Analyse the MEB landscape to discover the keys to success.
- Find out what it takes to place yourself in the international market.
- Deploy the right media and entertainment formats to mediatise your brand.
- Acquire international business skills to monetise it.
- And develop your platform management credentials to mobilise it.
- Expand your perspectives and your network while studying abroad.
- Learn the art and science of developing an international media sensation.



Technology & ICT

Bachelor of Applied Computer Science

Artificial Intelligence (Specialisation)

Application Development (Specialisation)

- Full (3 year) or abridged (1 year) programme
- Geel, Campus Geel
- Start date: September

thomasmore.be/en/eba-ai (full programme)

thomasmore.be/en/eba-ad (full programme)

thomasmore.be/en/eba-ac-short (abridged)

Take your skills to the next level!

- You believe in the power of computers to change the world for the better.
- Dig deeper into the most cutting-edge fields of computer science: from artificial intelligence and internet of things to cloud computing and more.
- Apply your pioneering spirit to develop digital solutions to real-life problems.
- Acquire in-depth application development skills to develop real innovations.
- Learn how to unlock the full potential of Python, PHP, Java, React and other programming languages.
- Boost your soft and hard skills during your international studies and internship.
- Join Electronics and ICT students at our IT Factory to expand your network, exchange ideas and accelerate your personal and professional development.
- Choose from multiple specialisation tracks to develop your expertise in collaboration with experienced mentors and practitioners from the IT world.
- Uncover exciting career opportunities in a wide variety of sectors.
- If you choose Application Development, you can work as a full stack or .Net developer after graduation.
- If you choose Artificial Intelligence, after graduation you can work as a data scientist, data consultant, artificial intelligence innovation lead ...



Bachelor of Automotive Technology

- Full (3 year) programme
- Sint-Katelijne-Waver, Campus De Nayer
- Start date: September

thomasmore.be/en/eba-at

Drive your ambition further!

- High-octane blood runs through your veins and fuels your passion for cars, trucks, motorcycles and all things automotive!
- You're keen to dive deeper into all areas of the automotive industry from mechanical to electronic engineering and motorsport.
- Become an expert in all major automotive systems.
- Learn how to diagnose a wide range of electronic and mechanical faults.
- Turn your hobby into a full-blown profession through intensive training.
- Explore the latest technological innovations from internal combustion engines to alternative hybrid and electric drivetrain systems.
- Become a future-proof automotive specialist with an emphasis on diagnostic techniques, trending technologies and management skills.
- Choose from three specialisation tracks to launch your career in trucks, motorcycles or motorsport.



Bachelor of Electronics-ICT

Electronics (Major)

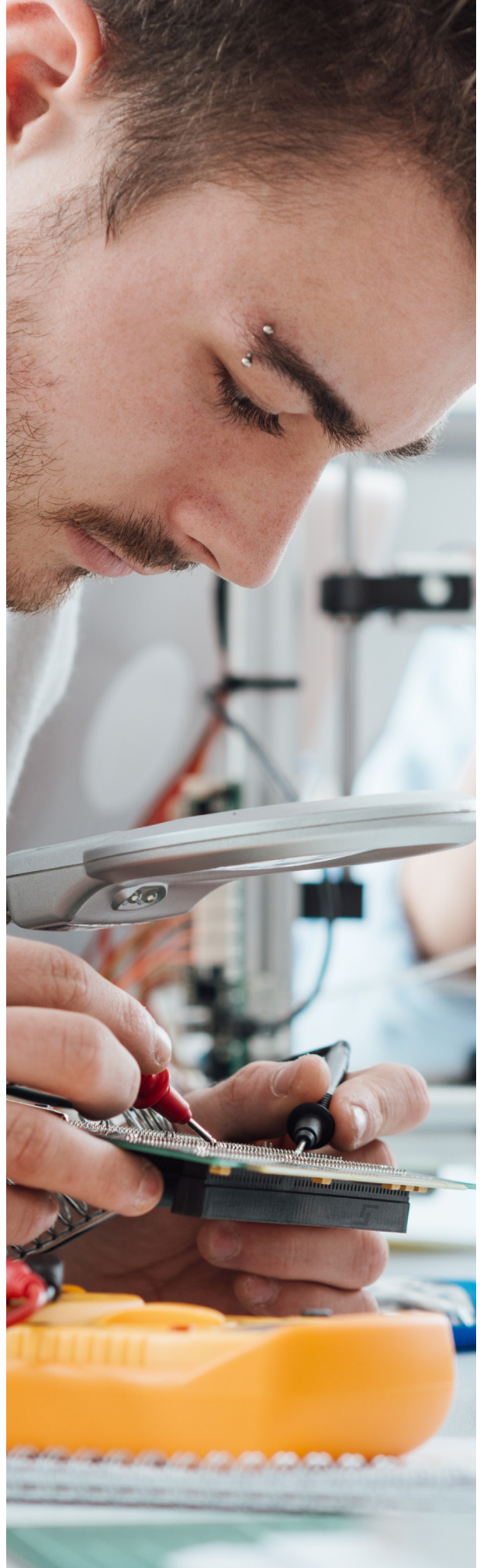
ICT (Major)

- Full (3 year) programme
- Sint-Katelijne-Waver, Campus De Nayer
- Start date: February or September

 thomasmore.be/en/eba-ei

Connect with the technology of tomorrow!

- Electronics and/or ICT are more than a hobby for you but an all-consuming passion.
- Explore the latest technological innovations and learn how to apply them.
- Get the skills you need to take your problem-solving capabilities to the next level.
- Combine creativity with theoretical insights to develop cutting-edge solutions.
- Choose between majors in Electronics or ICT.
- Put theory into practice with project-based work and practical enterprise labs.
- Keep up with the latest trends while defining your own.
- Apply your skills to real-life problems via your international traineeship and final year thesis.
- Get ready for an exciting career at the cutting edge of technological innovation.
- Get your extra certificate, to boost your CV: KNX, Cisco ...



GRADUATED BUT KEEN TO STUDY MORE?

Postgraduates

Postgraduate E-sports Manager

- Exclusively online!
- 6 different courses
- 4-6 weeks per course, separate or simultaneous
- Start date: February or September

 thomasmore.be/en/pgr-em

Your gateway to a legendary career!

- Study alongside other highly motivated students with a passion for esports who want to hone their management skills for a career in the E-sports industry.
- Acquire in-depth knowledge and get a clear understanding of the various esports ecosystems and their stakeholders.
- Become an expert in project and product management within the esports scene.
- Learn all about the specifics of E-sports event management.
- Discover case stories that explain how E-sports and gaming can help businesses boost their progress and reach new audiences.
- Unlock the fascinating world of E-sports sponsorship and partnerships.

Tuition fee

All courses are online.

Academic year 24/25

- only 2 courses are available: € 800

As of academic year 25/26

- Students that started in 24/25 can finish the postgraduate by taking the remaining 4 courses: € 1,700
- New students taking 6 courses in one academic year: € 2,500



Postgraduate African Business Studies

- Postgraduate, 1 year programme
- Mechelen, Campus De Vest
- Start date: September

 thomasmore.be/en/pgr-abs

Unique in Belgium!

- The Postgraduate in African Business Studies (PABS) is the first of its kind in Belgium and Europe.
- This programme is specifically developed to maximise professionals' knowledge of business on the African continent.
- In collaboration with African embassies in Brussels and first-class regional universities, the PABS programme offers a quality curriculum in African Business for graduate students and future managers pursuing a successful business career in Africa, Europe and the world at large.
- This programme has a unique global perspective as well as a regional focus. It was designed to face the growing demand for world-class professionals to manage relations between Africa and the rest of the world in the fields of business, entrepreneurship, and cross-cultural management.
- Through the PABS programme, you will benefit from a combination of in-depth global and Africa-specific business knowledge, setting yourself apart in the competitive global marketplace.
- The experience will also result in lasting friendships and access to a broad international network of ambitious professionals who, like you, care about making a difference in the world.

Tuition fee

- EEA-students: € 2,590
- non-EEA-students: € 3,990



Postgraduate International Teacher

- Postgraduate, 1 year programme
- Mechelen, Campus Kruidtuin
- Start date: October

 thomasmore.be/en/pgr-it

Blackboards Beyond Borders!

- Ready to push your personal and professional boundaries as a teacher?
- Already a qualified teacher with a high level of English?
- Learn what it takes to apply your skills in an international context.
- Develop your sensitivity for the impact of cultural differences.
- Gain key insights in intercultural competences, didactics and pedagogy in international education, while developing your English as an Additional Language skills.
- Reinforce your multicultural outlook while exchanging ideas and experiences as part of an international teacher group.
- Prepare for on-the-job learning and internships in international settings.
- Expand your international network and credentials thanks to our partnerships with global accreditation bodies and tertiary institutions.
- Transform your dream of teaching abroad into a reality with this postgraduate programme, unique in Belgium and recognised worldwide.

Tuition fee

- EEA (home candidates*): €2,190
- EEA (without scholarship): €2,900
- non-EEA-students: € 3,900

* Home candidates: candidates with a Belgian ID or who pay taxes in Belgium.

NEW! | Postgraduate Orthopaedic Technology

- Postgraduate, 1 year programme
- Geel, Campus Geel
- Start date: September

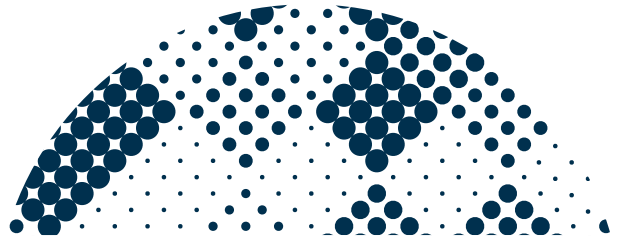
 thomasmore.be/en/pgr-ot

Let's take it one step further!

- Do you have a degree in orthopaedics or at least ten years of relevant work experience? Then put your passion for orthopaedic technology to good use!
- All professionals teaching this course are ISPO Cat 1 experts with plenty of experience.
- You'll learn how to use the perfect tool or technology to help your clients and will dive deep into the world of biomechanics, orthopaedic design and analysis.
- From knee braces to scoliosis corsets to shoe inserts, you know how to navigate the orthopaedic options available and tailor them to your clients.
- Your training is offered in collaboration with Mobilab & Care, our internationally renowned research centre.
- This course will give you access to an international network of orthopaedic specialists and the chance to collaborate with top tier orthopaedics companies worldwide.

Tuition fee

- EEA & Non-EEA: € 5,500



NEW! | Postgraduate Creative Belgium School

- Postgraduate, 1 year programme
- Mechelen, Campus De Ham
- Start date: September

 thomasmore.be/en/pgr-cbs

Become a conceptual creative thinker and maker for brands!

- Creativity drives progress, and it can be trained. That's where Creative Belgium School comes in: we are going to mine your creative talent and teach you how to use your creativity as a shortcut to success.
- Choosing Creative Belgium School will open a gateway to exciting jobs in the creative industry.
- Are you someone with an open mind who's willing to think out-of-the-box, strategically, and in an unbiased way? Then you are in the right place.
- The Creative Belgium School Programme is there to train creative minds to create meaningful ideas for brands, businesses, and society.
- You will be trained and coached by top creatives of the advertising industry. Using the latest techniques and tools, they will inspire you in creative strategy, conceptual and creative thinking, methodical thinking, idea execution, case studying, writing, and art direction.
- You will be prepped to become part of the next generation of creatives that develops and realises relevant, innovative, and memorable solutions for brands, companies, and society.

Tuition fee

- EEA & Non-EEA: € 3,250

Postgraduate Pharma and Healthcare Logistics

- Postgraduate, 1 year programme
- Mechelen, Campus De Vest
- Start date: September

 thomasmore.be/en/pgr-phl

Pave the way for a healthier world!

- Enrol in courses designed for alumni, pharma and healthcare professionals, and industry leaders.
- Study at the heart of European pharma and healthcare logistics.
- Learn every trick in the book when it comes to supply chain optimisation and prepare to be enlightened.
- Discover the challenges unique to pharma and healthcare logistics (regulations, cold chain distribution, temperature control) in detail.
- Stay in the loop on emerging technologies in the industry.
- Benefit from a comprehensive curriculum that includes compliance regulations, quality assurance and innovative solutions.
- Learn in classroom and on location from experienced speakers, leading academics, and professionals with industry experience.
- Enjoy countless networking opportunities.
- Make a global impact!

Tuition fee

- EEA-students: € 2,500
- non-EEA-students: € 3,600



Postgraduate Space and Service Design

- Postgraduate, 1 year programme
- Mechelen, Campus Lucas Faydherbe
- Start date: September

 thomasmore.be/en/pgr-ssd

Design for change!

- You will build on your BA or MA in design (industrial, product, graphic, service etc.), architecture, UX-UI, management, social sciences, tourism... with this fully accredited (60 ECTS) international postgraduate programme.
- You will acquire vital 21st-century skills: focussing on the users' needs, co-creation with communities, developing a digital perspective, creating evidence-based and context-based solutions, team working and team leading, prototyping and testing, strategic thinking and working with constraints. effective intercultural collaboration and communication, agile working. This skill set equips you for success in navigating today's dynamic, diverse and interconnected world.
- You will work collaboratively in multidisciplinary teams on real-life design challenges with real clients and end-users.
- You will expand your professional network with weekly Master Classes from industry experts, network events and work experiences.
- You'll push your boundaries and actively contribute to the achievement of UN Sustainable Development Goals.

Tuition fee

- EEA (home candidates*): € 2,300
- Other EEA candidates: € 3,140
- Non-EEA candidates: € 4,190

*Belgian candidates or candidates from other partners in education.

**It feels like
coming home.**



Home Base

Discover your future home base on one of our campuses, conveniently located throughout the Flanders region of Belgium. Find yourself in a bustling Belgian city, only a stone's throw from Brussels – the capital city – and Antwerp, Europe's second busiest seaport.

thomasmore.be/en/campuses

WELCOME TO

Geel

Geel is known as the city of hospitality. Discover our innovation campus, enjoy the beautiful green surroundings or meet up with friends in the charming city centre.

Soak in the green open spaces on campus ... but get to the city centre in no time. A shuttle bus runs straight from the train station to your campus - perfectly in sync with your course schedule. It couldn't be easier!

fb.com/wearegeel



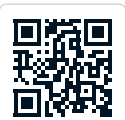
Our innovation campus is the place where technology meets health care. Find creative ways to develop prosthetics with cutting-edge materials and 3D printers. Discover the ICE cube, our centre for innovation, creativity and entrepreneurship, and get started on your very own company. In our international hub, you'll team up with other students to kick off your international career.

 Study on a campus with more than **5.895** students.



Videozone

Discover our campus virtually





WELCOME TO

Mechelen

Mechelen is a happening Flemish city with cosy neighbourhoods, cool hangouts and creative public initiatives – a high-profile alternative to Antwerp or Brussels.

You will also study in the city honored with the title of 'best mayor in the world!' Mechelen is hip and happening – a lively city on a student scale. The campus is centrally located, within walking distance of the shopping streets, and at the same time very quiet, nestled in the midst of the Kruidtuin Park.

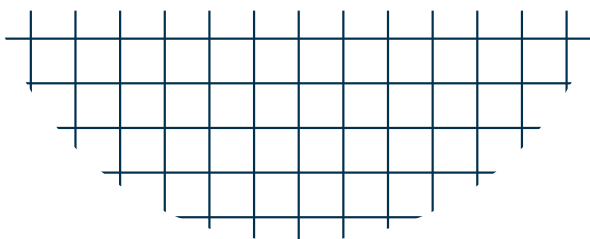
Have a cappuccino on-the-go while walking from the station to the campus. After your exam, have lunch in the sun and visit the shops. Then, back to the learning center to study, drop your books in your dorm room and head out for a night on the town! In Mechelen, everything is close by. #2800love, indeed!

 fb.com/wearemechelen

Videozone
Discover our
campus virtually



Campus Kruidtuin is where we train the kindergarten, primary and secondary education teachers of tomorrow. This experience-oriented campus is centered around education: the learning centre, the Junior Fablab, the 'Wigglewobblewoods' and the kindergarten lab are the ultimate places for students to work together on projects and assignments or just take a moment to unwind. Thanks to our unique infrastructure, you will get the chance to learn 'the trade' in a safe and supportive environment.





Campus De Vest

Zandpoortvest 60, 2800 Mechelen
 + 32 (0)15 36 91 00
 info.devest@thomasmore.be

Your international career starts here! Our state-of-the-art boardroom gives students a taste of the real business world. You'll work in an innovative environment on challenging projects, designed and supervised by our partner companies.



Campus De Ham

Raghenoplein 21bis, 2800 Mechelen
 + 32 (0)15 36 91 00
 info.deham@thomasmore.be

Let your creative juices flow in our green key and radio studios, both stocked with a variety of high-tech gadgets, like drones and VR glasses. Students have access to graphic workshops, a photo studio, a hip communications agency, an editorial room, editing cells, and much more!



Campus Lucas Faydherbe

Zandpoortvest 16, 2800 Mechelen
 + 32 (0)15 36 91 00
 info.faydherbe@thomasmore.be

Campus Lucas Faydherbe is a creative space with large, bright studios. In the workshop you'll find everything you need: 3D printers, laser cutters and panel saws, just to name a few. Plus, the warm and welcoming atmosphere allows staff and students to pleasantly mingle for a personalised and collaborative learning experience.

WELCOME TO

Sint-Katelijne-Waver

Campus De Nayer is a cutting-edge technology campus, with extensive research labs stretching over 12,000 square metres.

Experiment for yourself in our Makerspace; build your first prototype and even produce small volumes. You'll find all kinds of machines, materials and tools at your disposal: think 3D printers, laser cutters and milling machines.

fb.com/wearedenayer



Campus De Nayer

Jan De Nayerlaan 5, 2860 Sint-Katelijne-Waver
 + 32 (0)15 31 69 44
 info.denayer@thomasmore.be

Study on a campus with more than 1,189 students.

Videozone
 Discover our campus virtually




Student Support

HELP IS AT HAND

Excited to start a new adventure but still feeling a bit nervous?
Don't stress! Let Student Services show you the way!

thomasmore.be/stuvo | stuvo@thomasmore.be | [@stuvo.thomasmore](https://www.instagram.com/stuvo.thomasmore)



Should I stay...

... on campus? If you'd like a **room on campus**, you'll need to be quick. Our rooms are very popular and sell out in a flash. Check: www.thomasmore.be/housing



Or should I go...

... into town or the countryside? You can also make yourself at home in one of the **rooms for rent** on the private market. If you need assistance, our Student Services team will gladly help you out. If you need assistance, contact housing@thomasmore.be

Questions?

Our **International Support Team** will help you!

international.support@thomasmore.be
+ 32 15 36 92 10

Mon - Fri: 10:00 - 12:00 (Brussels time)

Questions about your individual study programme?
Your programme's designated study path coach
will help you out!



Let's get started!

Do I meet the admissions requirements? Do I need to prove my English proficiency? These are just some of the questions you might have before applying.

Luckily for you, our **admissions team** is here to guide you through the whole process. As soon as you receive your admission letter, you can apply for a student visa (if necessary) and look for **accommodation** using our online database.



Hit the ground running

In need of a helping hand? Our **buddies** – your fellow students – will be your first friends on campus and can even pick you up when you arrive, either at the airport in Brussels or at a train station. They will welcome you with open arms and get you settled in.

Not fully registered yet? Your buddy can also help you complete the last steps of your registration process. You'll have your student card in no time!



Meet other international students

During our **Welcome Days** you'll meet new students from all over the world.

By lunchtime, you'll know everything there is to know about living and studying in Belgium – from opening a bank account to the best Belgian 'frituur' to buy your "French" fries.

After a few icebreaker activities, you and your new friends will be ready to explore the campus and discover everything that student life in Belgium has to offer.



Want extra support?

Our **Student Services Team** (better known as “Stuvo”) is a strong support network for Thomas More students. The team offers a variety of activities to enjoy life on campus. They also provide workshops and support to help you manage your worries, stress and fear of failure. Stuvo will show you how to believe in yourself and find your inner strength.

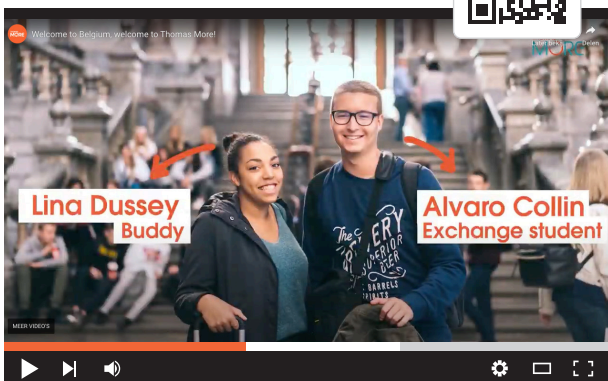
Despite the excitement of a new environment and new friends, your family may still be far away. With new courses, and possibly even a different way of taking exams, it is totally normal to feel a bit down at times. If you need someone to talk to, our **Student Service Counsellors** are here to support and encourage you. Anything discussed with our counsellors will be held in the strictest confidence.

Facilities for those studying with a disability, learning difficulty or any other special needs can be discussed with our **inclusion coordinator**. Work together with your coordinator to figure out what works best for your needs.

Need a break from studying? Our **international student organisation** (ESN) hosts fun activities, like speed dating, beer tasting, weekends away and other cool things to do. You’ll never feel lonely at Thomas More!

Videozone

Welcome to Belgium!



Living in Belgium



Living expenses

The cost of living in Belgium can vary according to many factors. It’s worth having a look what your day-to-day costs might be in Belgium.

Here are just a few examples of monthly expenses:

- **Accommodation: € 310 – 593**
- **Food: € 200 – 300**
- **Public transport: € 90**
- **Social activities: € 150**
- **Study costs: € 125**

Find special student prices on meals and other discounts throughout the country just by showing your student ID card. This makes life in Belgium more affordable for students. For example, a visit to the cinema will cost you up to € 5 less than a non-student!



Work after your studies

Extend your stay in Belgium to find a job after you’ve graduated with the orientation year.

Are you an international student with a valid residence permit as a non-EU student? Have you graduated at a Belgian university? Do you wish to find a job or start your own business in Belgium? You can apply for a residence permit as a graduate in an orientation year!



Students know best

Curious about student adventures in Belgium or at Thomas More? Who better to help you out than our current students! They are happy and ready to answer your questions, so don't hesitate to contact them.

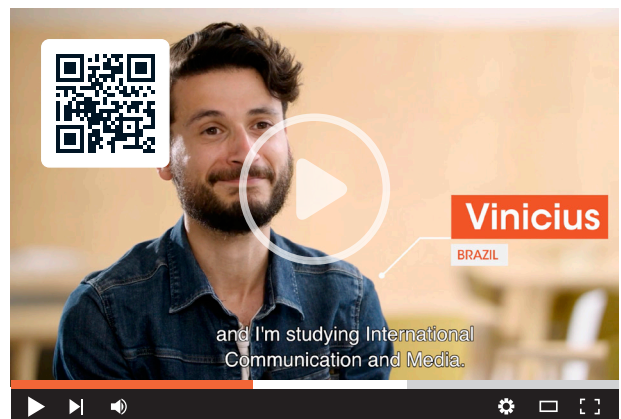
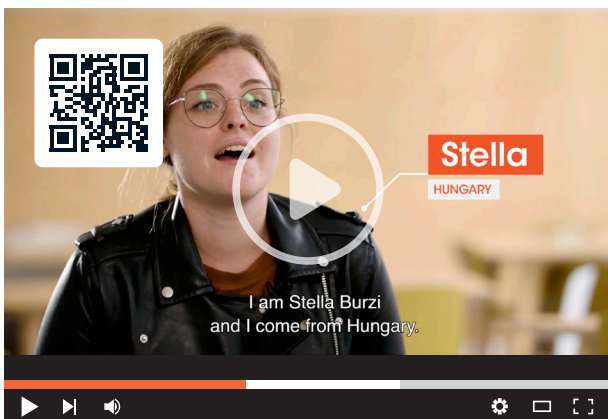


Scan the QR code to chat with a student from one of our English programmes.
thomasmore.be/en/chat



Want to read more about life at Thomas More, straight from our current students? Read about their experiences at stories.thomasmore.be/en

Videozone Testimonials





Admission & Application

Have you found your perfect fit? Then, go ahead and fill out your application. Even if you haven't obtained your secondary school diploma yet, you can already submit the application and send us your diploma once it's ready.



Students from outside the European Economic Area (non-EEA) are required to have a student visa to start studying at Thomas More, therefore they are encouraged to apply well in advance, since visa procedures can take weeks and sometimes even months.

Admission requirements

Our application process is straightforward, but of course you will need to fulfil some requirements.

Good to know:

Thomas More has no numerus clausus procedure, nor do we have a limit on the number of admitted students for our bachelor programmes.

Diploma requirements:

If you're qualified to start an equivalent programme in higher education in the country where you completed your secondary education, then you're qualified for admission to Thomas More. Additional requirements may be set for candidates with a diploma obtained in a non-EEA member state.

Language requirements:

You need to be reasonably proficient at speaking and writing English (level B2, European Framework).

For more details, please look at our web page:

thomasmore.be/en/admissions-application-procedure

Additional requirements:

For our postgraduates and short programmes, please check online if you meet the additional requirements for the programme of your choice.

Microcredential degree:

These are credit programmes with less than 54 credits spread over 1 academic year.

These programmes are only accessible for non-student visa seeking candidates. A student visa can only be obtained when starting a full-time study programme of minimum 54 credits. Therefore, we cannot accept students who will need a student visa to start studying a microcredential degree in Belgium. For more information, please check our website.

General application deadlines*

- **EEA-applicant:** no deadline (but don't miss our welcome week)
- **Non-EEA-applicant:** we encourage you to apply as soon as possible, as visa procedure can take weeks, even months. Ultimate deadline: Beginning of June for FALL and End of November for SPRING.

*Postgraduates: keep in mind the additional assessment dates applicable for your programme.

Student visa

Students coming from the EEA, Monaco or Switzerland can enrol in an English programme without a student visa. All other students will need to apply for a student visa before coming to Belgium. Received your registration certificate and/or financial attestation? Let our admissions team know in which Belgian Embassy you will be applying so we can confirm your registration.

Scholarships*

You may qualify for a merit based scholarship linked to your study results. If you pass at least 60% of your registered credits in the first exam period, you will get a reduction on the tuition fee in the following semester.

*For NON-EEA bachelor students in need of a student visa and for NON-EEA bachelor students who reside in Belgium with a residence permit based on studies.

Questions?

✉ admissions@thomasmore.be

☎ + 32 15 36 92 50

Mon - Fri: 09:00 - 15:00 (Brussels time)

Application procedure

EEA Candidates

- 1 Apply online: submit an online application.
- 2 File assessment (+- 2 weeks) & submit extra supporting documents (if you haven't already provided all the necessary documents).
- 3 If approved, you will receive a letter of admission.
- 4 Complete your registration through the application portal.

Non-EEA Candidates

- 1 Apply online: submit an online application.
- 2 File assessment (\pm 2 weeks) & submit extra supporting documents (if you haven't already provided all the necessary documents).
- 3 If approved, proof your financial solvability through our blocked account procedure and fulfill the payment of the first tuition fee invoice:
For bachelors: pay the fixed registration fee and the cost for 30 credits.
For postgraduates: pay the total tuition fee.
- 4 Receive a digital registration certificate and financial attestation.
- 5 Apply for a student visa.
- 6 Upload your visa and complete your registration through the application portal.

Bachelor's Degrees | Tuition fees 2025-2026

	EEA*	non-EEA (without scholarship)	non-EEA (with scholarship)
Fixed registration fee	€ 288	€ 4,500	€ 4,500
Cost first semester (30 ECTS)	€ 414	€ 2,250	€ 2,250
Cost second semester (30 ECTS)	€ 414	€ 2,250	€ 450
Total tuition fee per year (60 ECTS)	€ 1,116	€ 9,000	€ 7,200

*Be aware that an increase of pricing is expected for the Academic Year 2025-2026.
Please check our website for the latest updates and more details.

Postgraduates | Tuition fees 2025-2026

Tuition fees for postgraduates differ from the bachelor degrees. See p. 14-17 for the most accurate information regarding postgraduates tuition fees.

Want to meet us?

Check out our online events!

 thomasmore.be/en/join-our-events



Our open campus days and online webinars give you the opportunity to visit the campus, meet some teachers and get more information about the English programmes. We can also offer you more practical information about admissions and applications, tuition fees, student housing and much more!

Meet us in your country!

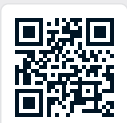
 thomasmore.be/en/meet-us-abroad



Are you curious to see if we will be visiting your city or country soon? Leave your details on our webpage and we will keep you up to date!

Live chat!

 thomasmore.be/en/chat



Chat with a student from our English programmes.

Any questions?

Contact our team!

Admissions:

✉ admissions@thomasmore.be

General information:

✉ international.support@thomasmore.be